

(19)



(11)

EP 3 562 267 A1

(12)

EUROPEAN PATENT APPLICATION

(43) Date of publication:
30.10.2019 Bulletin 2019/44

(51) Int Cl.:
H05B 6/06 (2006.01)

(21) Application number: **19168553.6**

(22) Date of filing: **10.04.2019**

(84) Designated Contracting States:
**AL AT BE BG CH CY CZ DE DK EE ES FI FR GB
 GR HR HU IE IS IT LI LT LU LV MC MK MT NL NO
 PL PT RO RS SE SI SK SM TR**
 Designated Extension States:
BA ME
 Designated Validation States:
KH MA MD TN

(72) Inventors:
 • **Baldo, Salvatore**
21024 Cassinetta di Biandronno (VA) (IT)
 • **Gallivanoni, Andrea**
21024 Cassinetta di Biandronno (VA) (IT)
 • **Forgione, Marco**
21024 Cassinetta di Biandronno (VA) (IT)
 • **Pastore, Cristiano Vito**
21024 Cassinetta di Biandronno (VA) (IT)

(30) Priority: **23.04.2018 US 201815959983**

(71) Applicant: **Whirlpool Corporation**
Benton Harbor, MI 49022 (US)

(74) Representative: **Spina, Alessandro**
Whirlpool EMEA SpA
Via Carlo Pisacane, 1
20016 Pero (MI) (IT)

(54) CONTROL CIRCUITS AND METHODS FOR DISTRIBUTED INDUCTION HEATING DEVICES

(57) An induction heating device comprises a D.C. power supply (46) referenced to a ground connection (54). The D.C. power supply (46) is configured to supply power to the induction heating device and comprises a voltage rectifier (50) configured to rectify an input voltage into a direct current and output the D.C. voltage to a D.C. bus (48) and a ground connection (54). The device further comprises a plurality of resonant loads (36) arranged in a matrix (62) comprising a plurality of columns (70) and

a plurality of rows (72). Each of the resonant loads (36) is connected at a first end to a row and at a second end to a column (70). A plurality of first switching devices (86a) are in connection with each of the columns (70) between the D.C. bus (48) and at least one of the resonant loads (36). A plurality of second switching devices (86b) are in connection with each of the rows (72) between the resonant loads (36) and the ground connection (54).

EP 3 562 267 A1

Description**TECHNOLOGICAL FIELD**

[0001] The present disclosure relates to an induction cooktop and, more specifically, to an induction cooktop assembly comprising a plurality of cooking zones.

BACKGROUND

[0002] Induction cooktops are devices which exploit the phenomenon of induction heating for food cooking purposes. The disclosure provides for a variety of improved assemblies for induction cooktops that may improve performance and/or economical manufacture. Such improvements may serve to improve the utilization of induction-based cooking technologies. Accordingly, the disclosure provides for assemblies, systems, and methods for induction cooktops.

SUMMARY

[0003] In at least one aspect, an induction heating device is disclosed. The device comprises a D.C. power supply referenced to a ground connection. The D.C. power supply is configured to supply power to the induction heating device and comprises a voltage rectifier configured to rectify an input voltage into a direct current and output the D.C. voltage to a D.C. bus and a ground connection. The device further comprises a plurality of resonant loads arranged in a matrix comprising a plurality of columns and a plurality of rows. Each of the resonant loads is connected at a first end to a row and at a second end to a column. A plurality of first switching devices are in connection with each of the columns between the D.C. bus and at least one of the resonant loads. A plurality of second switching devices are in connection with each of the rows between the resonant loads and the ground connection.

[0004] In at least another aspect, a method for controlling an induction heating device is disclosed. The method comprises selectively supplying D.C. power from a rectified power supply to a plurality of columns of a matrix of resonant loads through a plurality of first switches. The method further comprises controlling a first switching signal of the first switching devices in connection with each of the columns between the power supply and the resonant loads. The method further comprises controlling a second switching signal of a plurality of second switching devices in connection with each of a plurality of rows of the matrix between the resonant loads and a ground connection. The current is selectively conducted from the power supply through at least one selected resonant load of the resonant loads in response to an activation of the first switching device in connection to a selected resonant load in combination with an activation of the second switching device in connection with the selected resonant load.

[0005] In at least another aspect, an induction heating device is disclosed. The device comprises a D.C. power supply, referenced to a ground connection, configured to supply power to the induction heating device via a D.C. bus. The device further comprises a plurality of resonant loads. Each of the resonant loads comprises a first node and a second node arranged in a matrix comprising a plurality of columns and a plurality of rows. Each of the resonant loads is connected to at the first node to a column and the second node to a row. The device further comprises a plurality of first switching devices and a plurality of second switching devices. Each of the first switching devices is in connection with one of the columns between the D.C. bus and the resonant loads. Each of the second switching devices is in connection with one of the rows between the resonant loads and the ground connection. A rectifying device is connected in series with each of the resonant loads. The rectifying device defines a directional current flow path through each of the resonant loads.

[0006] These and other features, advantages, and objects of the present device will be further understood and appreciated by those skilled in the art upon studying the following specification, claims, and appended drawings.

BRIEF DESCRIPTION OF THE DRAWINGS

[0007] In the drawings:

FIG. 1A is a top, plan view of an induction cooktop assembly comprising a plurality of induction coils; FIG. 1B is a top, plan view of an induction cooktop assembly comprising a matrix of induction coils; FIG. 2 is a circuit diagram demonstrating a control circuit for a single, non-under-clamped quasi-resonant inverter; FIG. 3A demonstrates simulated results for a system response of the control circuit shown in FIG. 2 over a time interval; FIG. 3B demonstrates simulated results for a system response of the control circuit shown in FIG. 2 over a time interval; FIG. 4 is a circuit diagram demonstrating a control circuit for a matrix of non-under-clamped quasi-resonant inverters; FIG. 5 is a circuit diagram modified from the circuit shown in FIG. 4 demonstrating a current path within the matrix resulting from an omitted rectifying device; FIG. 6 is a circuit diagram demonstrating a control circuit for an emitter switched array of quasi-resonant inverters comprising switching devices arranged in series; FIG. 7 is a circuit diagram demonstrating a control circuit for an emitter switched array of non-under-clamped quasi-resonant inverters comprising switching devices arranged in series; FIG. 8 is a circuit diagram demonstrating a control circuit for an emitter switched array of non-under-

clamped quasi-resonant inverters comprising switching devices arranged in series; and FIG. 9 is a block diagram of an induction system comprising a controller configured to control one or more switching signals configured to control one or more quasi-resonant inverters in accordance with the disclosure.

DETAILED DESCRIPTION OF EMBODIMENTS

[0008] For purposes of description herein the terms "upper," "lower," "right," "left," "rear," "front," "vertical," "horizontal," and derivatives thereof shall relate to the device as oriented in FIG. 1. However, it is to be understood that the device may assume various alternative orientations and step sequences, except where expressly specified to the contrary. It is also to be understood that the specific devices and processes illustrated in the attached drawings, and described in the following specification are simply exemplary embodiments of the inventive concepts defined in the appended claims. Hence, specific dimensions and other physical characteristics relating to the embodiments disclosed herein are not to be considered as limiting, unless the claims expressly state otherwise.

[0009] Conventional induction cooktops may comprise a top surface made of glass-ceramic material upon which cooking units are positioned (hereinafter "cooking utensils"). Induction cooktops operate by generating an electromagnetic field in a cooking region on the top surface. The electromagnetic field is generated by inductors comprising coils of copper wire, which are driven by an oscillating current. The electromagnetic field has the main effect of inducing a parasitic current inside a pan positioned in the cooking region. In order to efficiently heat in response to the electromagnetic field, the cooking utensils may be made of an electrically conductive ferromagnetic material. The parasitic current circulating in the cooking utensil produces heat by Joule effect dissipation; such heat is generated only within the cooking utensil and acts without directly heating the cooktop.

[0010] Induction cooktops have a better efficiency than conventional electric resistive element cooktops. For example, heating cookware via induction provides for a greater fraction of the absorbed electric power to be converted into heat that heats the cooking utensil. In operation, the presence of the cooking utensil on the cooktop causes the magnetic flux to be directed into the pan itself resulting in power being transferred to the pan. The disclosure provides for assembly arrangements and methods for improved manufacturing and performance of induction cooktops. In particular, the disclosure provides for control circuit arrangements for cooktops comprising a plurality of induction coils.

[0011] Referring to FIGS. 1A and 1B, exemplary induction cooktop assemblies 10 are shown. A first induction cooktop assembly 10a may comprise a plurality of induction coils 14 forming cooking zones on a cooking surface

16. A second induction cooktop assembly 10b comprises a matrix 12 or array of induction coils 14 distributed over the cooking surface 16. In each of the embodiments 10a, 10b, and various similar or combined configurations, the induction coils 14 may be in communication with a controller 18. The controller 18 may be configured to selectively activate the induction coils 14 in response to an input to a user interface 20. The controller 18 may correspond to a control system configured to activate one or more cooking regions formed by the induction coils 14 in response to an input or user selection.

[0012] As later discussed in detailed reference to various exemplary embodiments, the induction coils 14 may be supplied current via one or more control circuits in communication with the controller 18. The control circuits may comprise switching devices that may be configured to generate a variable frequency/variable amplitude current to feed the induction coils 14. The switching devices implemented in various embodiments of the disclosure may comprise a variety of switching technologies and configurations. For example, in some embodiments, the switching devices may comprise one or more power semiconductor devices. The power semiconductor devices may comprise one or more transistors, thyristors, metal-oxide-semiconductor-field-effect-transistors (MOSFETs), power MOSFETs, insulated gate bipolar transistors (IGBTs), switch controlled rectifiers (SCRs), etc. Accordingly, the disclosure may provide for the induction coils 14 to be driven by a variety of control circuits to heat a cooking utensil 22 (e.g. pans, pots, etc.).

[0013] In some embodiments, the induction coils 14 may be independently activated by the controller 18. The activation of the induction coils 14 may be in response to a user-defined heat setting received via the user interface 20 in conjunction with a detection of a cooking utensil 22 on the cooking surface 16. In response to the user-defined setting and the detection of the cooking utensil 22, the controller 18 may activate the induction coils 14 that are covered by the cooking utensil 22. Accordingly, the cooktop assembly 10 may provide for the cooking surface 16 to be selectively energized providing for a plurality of flexible cooking zones that may be referred to as a "cook anywhere" functionality.

[0014] The user interface 20 may correspond to a touch interface configured to perform heat control and selection induction coils 14 for a cooking operation. The user interface 20 may comprise a plurality of sensors configured to detect a presence of an object (e.g. a finger of an operator) proximate thereto. The sensors of the user interface 20 may correspond to various forms of sensors. For example, the sensors of the user interface 20 may correspond to capacitive, resistive, and/or optical sensors. In some embodiments, the user interface 20 may further comprise a display 24 configured to communicate at least one function of the cooktop assembly 10. The display 24 may correspond to various forms of displays, for example, a light emitting diode (LED) display, a liquid crystal display (LCD), etc. In some embodiments,

the display 24 may correspond to a segmented display configured to depict one or more alpha-numeric characters to communicate a cooking function of the cooktop 10. The display 24 may further be operable to communicate one or more error messages or status messages from the controller 18.

[0015] Referring now to FIG. 2, in some embodiments, a control circuit 30 of for the induction cooktop assembly 10 may be implemented using a novel configuration. For clarity, the control circuit 30 shown in FIG. 2 is referred to as the first control circuit 30a. The first control circuit 30a may be implemented as a variant of a quasi-resonant inverter. The variant of the quasi-resonant inverter shown in FIG. 2 is referred to as a Non-Under-Clamped, Quasi-Resonant (hereinafter referred to as NUC-QR) Inverter 32. The NUC-QR inverter 32 comprises a rectifying device 34 connected in series with a resonant load 36 and a switching device 38. As shown in FIG. 2, the rectifying device 34 is interposed along the path between a D.C. power supply 46, a resonant load 36, and a switching device 38.

[0016] The rectifying device 34 may be implemented as a semiconductor diode. Semiconductor diodes may include, but are not limited to, junction diodes, Silicon Diodes, Silicon Carbide Diodes, Schottky diodes, etc. In some embodiments, the control circuits and corresponding components may be referred to using specific identifiers (e.g. first, second, third, etc.). The specific identifiers may be used for clarity to distinguish among the exemplary embodiments of the control circuits 30 demonstrated in the figures. However, such designations shall not be considered limiting to the scope of the disclosed configurations provided herein. Accordingly, the control circuits 30 and underlying components may be combined or implemented in combination without departing from the spirit of the disclosure.

[0017] The resonant load 36 may be formed by an inductor 40 representing one of the induction coils 14 and a capacitor 42, connected in series with the rectifying device 34. Though demonstrated with the rectifying device 34 located downstream along a current path 44, in some embodiments, the rectifying device 34 may be located upstream of the resonant load 36, between the resonant load 36 and a direct current (D.C.) power supply 46. A representation of the rectifying device 34 positioned upstream of the resonant load 36 is shown in phantom lines. In operation, the function of the rectifying device 34 is to prevent any return current to a D.C. bus 48 when the resonant voltage (V_a , V_c) is less than zero. The D.C. power supply 46 may comprise a voltage rectifier 50, configured to rectify a mains input voltage 52 into direct current and output the D.C. voltage to the D.C. bus 48 and a ground connection 54. Additionally, the rectifier 50 may comprise a D.C. bus capacitor 56, which may be configured to smooth the voltage of the D.C. bus 48.

[0018] The arrangement of the rectifying device 34 arranged in series with the switching device 38 (e.g. an IGBT), may be referred to as a reverse blocking config-

uration. In operation, the rectifying device 34 is configured to prevent return current traveling upstream opposite to the current path 44 normally flowing from the D.C. bus 48 to the resonant load 36. Accordingly, a duration of a resonant phase of the NUC-QR inverter 32 is extended, leading to an improved regulation range. Additional benefits of the operation of the NUC-QR inverter 32 may include decreased electromagnetic interference (EMI) and improved operating efficiency when compared to conventional inverter topologies. In this configuration, the controller 18 may be configured to control the switching device 38 via a control signal 58 to generate an electromagnetic field to inductively heat the cooking utensil 22 over an increased operating range.

[0019] FIGS. 3A and 3B demonstrate simulated results of the system response of the first control circuit 30a. Referring to FIGS. 2, 3A, and 3B, the component types utilized for the simulation shown in FIGS. 3A and 3B are as follows: switching device 38 (IGBT - APT25GF100BN), rectifying device 34 (Diode - STTH3010D), capacitor 42 (270nF), and inductor 40 (80uH with a series resistor of 4 Ω). As represented in FIG. 3A, the waveforms of the NUC-QR inverter 32 include gate voltage V_{ge} applied to the gate of the switching device 38, the current I_{cres} through the capacitor 42, I_{sw} through the switching device 38, and the current I_{coil} through the inductor 40. The waveforms demonstrated in FIG. 3B demonstrate the voltage difference V_{ce} across the switching device 38 between the cathode voltage V_c and the emitter voltage V_e . FIG. 3B additionally demonstrates the voltage difference V_{ae} across the rectifying device 34 and the switching device 38 between the anode voltage V_a and the emitter voltage V_e and the difference between the V_{ce} and V_{ae} . Finally, FIG. 3B demonstrates the power loss W_{SW} of the switching device 38.

[0020] The waveforms demonstrated in FIGS. 3A and 3B are demonstrated over a plurality of time intervals t_0 , t_1 , t_2 , t_3 , t_4 , and t_5 . From time intervals t_0 to t_1 , a gate voltage V_{ge} or command voltage of the switching device 38 is high. Accordingly, both the switching device 38 and the rectifying device 34 are ON and the currents I_{SW} through the switching device 38 and the current I_{coil} through the inductor 40 are the same. Additionally, the voltages V_{ce} and V_{ae} are approximately zero. The phase denoted from t_0 to t_1 is called a charging phase of the inductor 40. At the time $t = t_1$, the switching device 38 is turned OFF by the controller 18. Following the charging phase, the free evolution phase or resonant phase begins and persists until the time $t = t_5$.

[0021] In the resonant phase from times t_1 to t_2 , the capacitor 42 and the inductor 40 begin to resonate, exchanging energy. At the time $t = t_2$, the voltages V_{ce} and V_{ae} are maximum. At this stage, the voltages V_{ce} and V_{ae} must not exceed a voltage limit or breakdown voltage of the switching device 38. From times t_2 to t_3 , the free evolution of the resonant group continues, and a negative voltage across the rectifying device 34 begins to grow. At the time $t = t_3$, the voltage V_{ae} becomes negative and

the rectifying device 34 remains reverse polarized. The rectifying device 34 remains reverse polarized until the time $t = t_5$, when V_{ae} becomes zero.

[0022] The operational phase associated with the proposed first control circuit 30a occurring from times t_3 to t_5 does not occur in conventional configurations that have previously been implemented. Indeed, in conventional inverters, an anti-parallel diode is typically used to limit the negative voltage difference V_{ce} to zero across the switching device 38 between the cathode voltage V_c and the emitter voltage V_e . In contrast, and according to the present invention, the NUC-QR inverter 32 of the first control circuit 30a does not clamp the voltage V_{ce} , allowing the voltage V_{ae} to vary freely to negative values. During the phase from times t_3 to t_5 , there is no current flow in the switching device 38 because the rectifying device 34 is reverse polarized.

[0023] The reverse polarization of the rectifying device 34 is caused by a negative voltage at the anode of the rectifying device 34 (i.e. node V_a). Between the time instants t_3 and t_5 , the current passing through the inductor 40 (I_{coil}) is supplied by the capacitor 42. Therefore, there are no losses in the switching device 38, which results in an improved operating efficiency in comparison to conventional inverter arrangements. Finally, at the time $t = t_5$, the voltage across the rectifying device 34 ($V_{ae} - V_{ce}$) crosses zero. At this time, the switching device 38 begins to close the path for the current passing through the inductor 40 (I_{coil}).

[0024] The beneficial configuration of the first control circuit 30a and the NUC-QR inverter 32 enables an increased timing range for the activation of the switching device 38 while maintaining soft-switching operation. For example, during the phase from times t_3 to t_5 , the switching device 38 may be controlled to turn ON (e.g. at $t = t_4$) without incurring in hard-switching losses. The soft-switching range is substantially extended because the commutation at high voltage levels V_{ce} across the switching device 38 does not involve the discharge of the large resonant capacitor as required by conventional systems. Instead, only a relatively small parasitic capacitance is associated with the switching operation of the switching device. The power loss associated with the parasitic capacitance is shown in FIG. 3B as a power loss 60 at the output of the switching device 38. Accordingly, the operation of the first control circuit 30a comprising the NUC-QR inverter 32 provides for improved efficiency by limiting loss associated with controlling the switching device 38 and also extending the operating range the inverter while maintaining soft-switching operation.

[0025] Another important aspect of the present disclosure, particularly when the switching device is embodied as for instance an IGBT, is the widening of the power delivery curve as a function of the IGBT ON time, with an increase in the maximum power being delivered to the induction coil 14 for a given maximum resonant voltage at the IGBT collector. This increase in maximum power is due to the use of a larger fraction of the energy

stored in the capacitor 42 in the resonant load 36 during the phase t_3 - t_5 , where the V_{ae} is negative. In fact, in the conventional quasi-resonant inverter, this phase is blocked by the anti-parallel diode of the IGBT.

[0026] The particular arrangement of the first control circuit 30a and the NUC-QR inverter 32 may be implemented in a variety of ways to provide for the improved operation of various devices for induction cooking and heating. The following discussion provides for similar novel configurations of control circuits 30 that may incorporate the operation of similar circuit configurations to achieve similar benefits to those discussed in reference to the first control circuit 30a. Accordingly, the following exemplary embodiments of control circuits may be implemented alone or in combination in various applications to provide for improved performance for induction heating and cooking. Additionally, common or similar elements of each of the control circuits 30 may be referred to by like reference numerals for clarity.

[0027] Referring now to FIG. 4, a circuit diagram is shown demonstrating a second control circuit 30b for a matrix 62 of inverters 64. The matrix 62 may comprise M rows 72 and N columns 70, where $M=3$ and $N=2$ in the representation are shown in FIG. 4. Similar to the first control circuit 30a, the second control circuit 30b may implement a matrix configuration of the NUC-QR inverter 32. Accordingly, each of the inverters 64 forming the matrix 62 may be implemented as the NUC-QR inverter 32. As previously discussed, each of the NUC-QR inverters 32 may comprise a rectifying device 34 arranged in series with the resonant load 36 and a switching device 38. More generally, each of the rectifying devices 34 may be connected in series, upstream or downstream to the resonant loads 36, along the resonant load current path 66. As illustrated in the exemplary embodiment, each of the resonant loads 36 may be formed by the inductor 40 and the capacitor 42 arranged in parallel and connected upstream along the current path 66 relative to the rectifying device 34.

[0028] As shown in FIG. 4, the inductors 40 representing the induction coils 14 are arranged in columns 70 and rows 72. Each of the columns 70 is connected to the D.C. bus 48 via a column-switching device 74. For clarity, the column switching devices 74 of each of the columns 70 may be referred to as a first column switching device 74a, a second column switching device 74b, etc. Additionally, each of the rows 72 is connected to a control input from the controller 18 via a row-switching device 76. The row switching devices 76 of each of the rows 72 may be referred to as a first row switching device 76a, a second row switching device 76b, etc. The row-switching devices 76 are further in connection with the ground connection 54 of the voltage rectifier 50. In this configuration, the controller 18 may selectively activate each of the inductors 40 to activate flexible heating zones on the surface 16 of the cooktop 10. Though the terms rows 72 and columns 70 are discussed in reference to each of the embodiments, it shall be understood that the arrange-

ment of the rows 72 and columns 70 may be transposed without departing from the spirit of the disclosure.

[0029] The second control circuit 30b may limit the specific combinations of inductors 40 that can be energized by the controller 18 at a given time. In an exemplary embodiment, the induction coils 14 represented by the inductors 40 are preferably rated to supply an average power of up to 500W and a peak power preferably comprised between 3 and 6 times the average power. Accordingly, each of the inductors 40 may operate with a maximum Duty Cycle equal to the ratio between the average power and the peak power, wherein the ratio ranges from approximately 1:3 to 1:6. In this way, the controller 18 may be configured to energize a limited number of coils at any given time. This operation inherently results in an increased probability that an overlapping operating frequency range can be achieved for multiple induction coils 14 operating simultaneously on one or more of the rows 72 or columns 70, resulting in the possibility of the induction coils 14 to operate at the same identical frequency.

[0030] The presence of the rectifying device 34 provides for the second control circuit 30b to prevent current from passing among the resonant loads 36. Still referring to FIG. 4, a first column 70a of the second control circuit 30b comprises a first resonant load 36a connected in series with a first rectifying device 34a and a second resonant load 36b connected in series with a second rectifying device 34b. Each of the first resonant load 36a and the second resonant load 36b are connected to a first column 70a. The first resonant load 36a is further connected to a first row 72a, and the second resonant load 36b is further connected to a second row 72b.

[0031] The second control circuit 30b further comprises a third resonant load 36c connected in series with a third rectifying device 34c and a fourth resonant load 36d connected in series with a fourth rectifying device 34d. Each of the third resonant load 36c and the fourth resonant load 36d are connected to a second column 70b. The third resonant load 36c is further connected to the first row 72a, and the second resonant load 36b is further connected to the second row 72b. As shown in FIG. 4, the rectifying devices 34 may prevent current from passing among each of the resonant loads 36. Though specific numbers are referenced to identify specific elements shown in the figures, such reference numerals shall not be considered limited to the disclosure.

[0032] In FIG. 5 is illustrated an example of the second control circuit 30b in which one of the rectifying devices 34 is omitted. As referred to in FIG. 5, the fourth rectifying device 34d of the diagram shown in FIG. 4, is omitted. During typical operation, as illustrated by the corresponding dashed line in the Key for FIG. 5, the controller 18 may activate the first resonant load 36a by activating each of a first column-switching device 74a and a first row-switching device 76a. The switching devices 38 are shown activated in response to a first signal 58a and a second signal 58b transmitted from the controller 18. Accordingly, as shown, the current may flow from the D.C.

bus 48, through the first column-switching device 74a, through the first resonant load 36a, the first row switching device 76a, and to the ground connection 54.

[0033] The operation of the second resonant load 36b is hereafter discussed in reference to FIG. 5, in which the fourth rectifying device 34d is omitted. As illustrated in FIG. 5 by the corresponding dashed line in the Key for fault operation, the omission of the fourth rectifying device 34d may result in the current passing through the second resonant load 36b and traveling along the second row 72b toward the fourth resonant load 36d. The current may further be conducted from the fourth resonant load 36d upstream along the second column 70b and through the third resonant load 36c. As derivable from the above description, the rectifying devices 34 may prevent current from traveling outward from one resonant load 36 and into another thereby preventing an unwanted working condition, wherein resonant loads 36b, 36d, and 36c are activated in addition to the only desired resonant load 36a. Additionally, the utilization of the rectifying devices 34 renders not necessary the use of switching devices with anti-parallel diodes (e.g. reverse conducting IGBTs) such that simpler and less expensive switching devices may be utilized to construct the second control circuit 30b.

[0034] Referring again to FIG. 4, each of the switching devices 38 of the second control circuit 30b may be in communication with the controller 18. In this configuration, the controller 18 may be operable to coordinate the staggered activation of each resonant load 36 within the matrix 62. In such embodiments, the controller 18 may be configured to monitor one or more electrical characteristics of each induction coil 14. The controller 18 may monitor characteristics, such as current or voltage supplied to each of the induction coils 14 via one or more feedback inputs of the controller 18, which may correspond to analog or digital inputs. The characteristics of each of the induction coils 14 monitored by the controller 18 may include a complex impedance vs. frequency or the power vs. frequency curve. Based on the feedback information from the induction coils 14, the controller 18 may compute an activation sequence of predetermined duration T_{prog} . The activation sequence may comprise a sequence consisting of N_{prog} time slices of duration T_s , wherein the control variables (period, duty cycle) of the switching devices are kept substantially constant. As discussed herein, each of the control circuits 30 may comprise a controller or control circuit configured to control the one or more associated switching devices. Further details regarding an exemplary embodiment of the controller 18 are discussed in reference to FIG. 10.

[0035] The activation sequence of the controller 18 may correspond to a data structure representing the switching frequency and duty cycle of the switching devices 38 connected to each of the columns 70 and rows 72 in connection with the resonant loads 36. For example, the controller 18 may be configured to communicate an activation signal configured to selectively activate each of the column-switching devices 74 and the row-switch-

ing device 76 at each time slice T_s over the duration T_{prog} of the activation sequence. The time slice duration T_s may be set equal to one semi-period of a frequency of the mains input voltage 52 or an integer number of semi-periods of the mains input voltage 52.

[0036] The activation sequence for the matrix 62 of the induction coils 14 may be computed by the controller 18 with a plurality of constraints. For example, a first constraint may require that every time slice duration T_s for each row-switching device 76 be either idle (OFF) or operating at a common frequency, equal for every resonant load 36 that is active in a particular semi-period of the frequency of the mains input voltage 52, wherein the frequency may vary from one time slice T_s to another. A second constraint applied to the operation of the controller 18 may require that each of the column-switching devices 74 be either idle (OFF) or closed (ON) for every time slice duration T_s . A third constraint may require that a Boolean matrix C_d defining the states (OFF/ON) of each inductor 40 in the matrix 62 must have a unitary rank for every time slice duration T_s . Finally, a fourth constraint may require that the controller 18 controls the average power to each resonant load 36 averaged over T_{prog} to be equal to a desired setpoint. Thanks to this control method, it is possible to energize in a controlled manner the individual induction coils 14, 40 without incurring in unwanted cross-conduction.

[0037] As shown in FIG. 4, the matrix 62 is represented having M rows 72 and N columns 70. The mains input voltage 52 may comprise a 2 phase or 3 phase distribution system. Accordingly, the N columns 70 could be divided into 2 or 3 groups in order to balance the power across the corresponding phases. For example, if $N=8$, a cooktop 10 is rated for a maximum power of 7200W at 230V could be split into two sub-matrices of $N=4$ columns 70 each. Each matrix of the cooktop 10 may then be rated at a total power of 3600W, wherein each of the two matrices is connected to a different phase of the mains input voltage 52.

[0038] The sub-matrices may be fed by one of the voltage rectifiers 50, which may be commonly connected to all of the columns 70 connected to the same phase of the mains input voltage 52. In this configuration, the common voltage rectifier 50 may provide for the voltage across each of the D.C. bus capacitors (e.g. D.C. bus capacitor 56) to be discharged to near zero voltage at every zero crossing of the mains input voltage 52 when power is being delivered to at least one inductor 40 attached to that particular phase/sub-matrix. This operation may result in the beneficial effect of allowing the possibility of the controller 18 to soft-start any of the inverters 64 at the next semi-cycle of the mains input voltage 52 because the voltage of the D.C. bus capacitor 56 is approximately zero at this time.

[0039] Referring now to FIGS. 6-8, circuit diagrams are shown for emitter-switched arrays 82 of the induction coils 14, which are represented by inductors 40 of the resonant loads 36. For clarity, each of the control circuits

30 demonstrated in FIGS. 6, 7, and 8 may be referred to respectively as a third control circuit 30c, a fourth control circuit 30d, and a fifth control circuit 30e. The control circuits 30c, 30d, and 30e may each be configured to control the current supplied to a plurality of inverters 84 comprising the switching devices 38 arranged in series.

[0040] Each of the arrays 82 of the inverters 84 shown in FIGS. 6-8 may comprise a plurality of the switching devices 38 connected in series. For clarity, the switching devices 38 may be referred to as a first switching device 86a and a second switching device 86b. The first switching device 86a may be connected in series with each of the resonant loads 36. Additionally, each of the first switching devices 86a may be connected to a common, second switching device 86b. The series connection of the switching devices 86a and 86b may provide for improved switching performance while minimizing cost. Each of the control circuits 30 may be supplied power via the D.C. power supplies 46 comprising the voltage rectifier 50. As previously discussed, the voltage rectifier may be configured to rectify a mains input voltage 52 into direct current and output the D.C. voltage to the D.C. bus 48 and a ground connection 54. Further details of the specific configurations of each of the exemplary embodiments shown in FIGS. 6-8 are provided in the following description. In general, the switching devices 86a, 86b discussed in reference to FIGS. 6-8 may be referred to as the switching devices 86.

[0041] Referring now to FIG. 6, the third control circuit 30c may comprise the array 82 of inverters 84 connected in parallel. The resonant loads 36 may comprise the inductor 40 and the capacitor 42 connected in parallel. Each of the resonant loads 36 may be connected to the D.C. bus 48 and further connected in series with one of the first switching devices 86a. The first switching devices 86a are connected to the second switching device 86b via a common node 88. In this configuration, the controller 18 may be configured to drive the resonant loads 36 of the third control circuit 30c synchronously or in a time-multiplexed mode of operation.

[0042] In some embodiments, the first switching devices 86a may correspond to high voltage devices with comparatively low switching speeds while the second switching device 86b may correspond to a relatively low voltage, high switching speed device. In this configuration, the third control circuit 30c may provide for a fast switching rate supported by the second switching device 86b while controlling the high voltage of the resonant loads 36 with the first switching devices 86a.

[0043] Referring now to FIG. 7, the fourth control circuit 30d is shown. The fourth control circuit 30d may be similar to the third control circuit 30c and may further comprise the rectifying devices 34 arranged in series with the resonant loads 36. As demonstrated in FIG. 7, each of the inverters 84 comprises the rectifying device 34 interposed between the resonant loads 36 and the first switching devices 86a. The rectifying devices 34 may prevent current passing among the first switching devices 86a by

blocking return currents in each of the inverters 84. Though demonstrated with the rectifying device 34 located downstream, in some embodiments, the rectifying device 34 may be located upstream of the resonant load 36, between the resonant load 36 and the D.C. bus 48. A representation of the rectifying device 34 positioned upstream of the resonant load 36 is shown in phantom lines.

[0044] Referring to FIGS. 6 and 7, the first switching devices 86a may be implemented as current controlled switching devices. Such devices may include but are not limited to: bipolar junction transistors (BJTs), insulated-gate bipolar transistors (IGBTs), or other low output impedance devices. In exemplary embodiments, BJTs may be implemented to limit cost and take advantage of the decreased switching speeds required for operation of the first switching devices 86a. The second switching device 86b may be implemented as a voltage controlled switching device. In an exemplary embodiment, the second switching device 86b may be implemented as a field-effect transistor (FET) or metal oxide semiconductor FET (MOSFET).

[0045] In operation, the connection of the first switching devices 86a and the second switching devices 86b may provide for the controller 18 to control the current supplied to the resonant loads 36 via a union of activation of one or more of the first switching devices 86a in combination with the second switching device 86b. In this configuration, only one of each of the series connected pairs of the switching devices 86a, 86b need to operate at the full switching speed desired for operation of each of the resonant loads 36. For example, the first switching devices 86a may be configured to operate at switching speeds significantly less than the second switching device 86b. Such operation is demonstrated by the relative frequency of the first control signals 90a supplied to first switching devices 86a and the second control signals 90b supplied to second switching device 86b. In some embodiments, the controller 18 may control the first switching devices 86a to operate at a switching frequency less than 5 kHz, while the second switching device 86b is controlled to operate at a frequency greater than 5 kHz.

[0046] Additionally, the common connection of the first switching devices 86a to the second device 86b may provide for the control circuits 30c, 30d, 30e to supply a common switching signal to the second switching device 86b. The common frequency may be supplied by a pulse width modulator 92 operating at a constant frequency. The pulse width modulator 92 is demonstrated in FIG. 9 and may be implemented as a dedicated circuit that may be controlled by the controller 18. In this configuration, the individual activation of the first switching devices 86a may be actively controlled by the controller 18 at a relatively low speed. This configuration may provide for the controller 18 to have significantly simplified operational and computational processing requirements, which, in turn, limit the cost of the controller 18 and related components of the control circuits 30c, 30d, 30e.

[0047] Referring now to FIG. 8, the fifth control circuit 30e is shown. The fifth control circuit 30e may similarly include the first switching devices 86a connected to the common second switching device 86b. However, the fifth control circuit 30e may differ in that the first switching devices 86a may be implemented as silicon controlled rectifiers (SCRs). The SCRs may provide for the beneficial function of limiting current passing among the first switching devices 86a upstream of the second switching device 86b. Accordingly, the fifth control circuit 30e may not require the separate rectifying devices 34 implemented in the fourth control circuit 30d. Additionally, in the fifth control circuit 30e, the second switching device 86b may be implemented as an IGBT rather than a MOSFET due to the high resonance voltage of the inverters 84 passing through the first switching devices 86a.

[0048] Referring now to FIG. 9, a block diagram is shown demonstrating induction system 100 comprising the controller 18. The controller 18 may be configured to selectively activate the induction coils 14 represented by the resonant loads 36 in response to an input to the user interface 20. The controller 18 may be implemented as a master controller of a distributed control system. Accordingly, the controller 18 may be configured to control one or more inverter controllers 102, pulse width modulators 92 or various other circuits configured to selectively activate each of the induction coils 14. Accordingly, the controller 18 may be configured to selectively activate one or more cooking regions formed by the induction coils 14 in response to an input or user selection received by the user interface 20.

[0049] In general, the controller 18 may be configured to control one or more switching signals supplied to the switching devices 38 as discussed in reference to each of the control circuits 30. The controller 18 may comprise a memory and may be configured to operate one or more control schemes to selectively activate the induction coils 14 of the induction cooktop 10.

[0050] The user interface 20 may correspond to a touch interface configured to perform heat control and receive a selection of the induction coils 14 for a cooking operation. The user interface 20 may comprise a plurality of sensors configured to detect a presence of an object (e.g. a finger of an operator) proximate thereto. The sensors of the user interface 20 may correspond to various forms of sensors. For example, the sensors of the user interface 20 may correspond to capacitive, resistive, and/or optical sensors.

[0051] In some embodiments, the user interface 20 may further comprise a display 24 configured to communicate at least one function of the cooktop 10. The display 24 may correspond to various forms of displays, for example, a light emitting diode (LED) display, a liquid crystal display (LCD), etc. In some embodiments, the display 24 may correspond to a segmented display configured to depict one or more alpha-numeric characters to communicate a cooking function of the cooktop 10. The display 24 may further be operable to communicate one or more

error messages or status messages from the controller 18.

[0052] As demonstrated in FIG. 9, the control circuits 30 (e.g. the first control circuit 30a, the second control circuit 30b, etc.) are generally demonstrated in connection with the controller 18. According, the controller 18 may be configured to directly control the switching devices 38 or indirectly control the switching devices 38 in a distributed control configuration via the inverter controllers 102, modulators 92, or other similar control devices. The control circuits 30 are in connection with the D.C. power supply 46. The D.C. power supply 46 may comprise a voltage rectifier 50 configured to rectify a mains input voltage 52 into direct current and output the D.C. voltage to the D.C. bus 48 and a ground connection 54. Additionally, the rectifier 50 may comprise a D.C. bus capacitor 56, which may be configured to smooth the voltage of the D.C. bus 48.

[0053] It will be understood by one having ordinary skill in the art that construction of the described device and other components is not limited to any specific material. Other exemplary embodiments of the device disclosed herein may be formed from a wide variety of materials unless described otherwise herein.

[0054] For purposes of this disclosure, the term "coupled" (in all of its forms, couple, coupling, coupled, etc.) generally means the joining of two components (electrical or mechanical) directly or indirectly to one another. Such joining may be stationary in nature or movable in nature. Such joining may be achieved with the two components (electrical or mechanical) and any additional intermediate members being integrally formed as a single unitary body with one another or with the two components. Such joining may be permanent in nature or may be removable or releasable in nature unless otherwise stated.

[0055] It is also important to note that the construction and arrangement of the elements of the device as shown in the exemplary embodiments is illustrative only. Although only a few embodiments of the present innovations have been described in detail in this disclosure, those skilled in the art who review this disclosure will readily appreciate that many modifications are possible (e.g., variations in sizes, dimensions, structures, shapes and proportions of the various elements, values of parameters, mounting arrangements, use of materials, colors, orientations, etc.) without materially departing from the novel teachings and advantages of the subject matter recited. For example, elements shown as integrally formed may be constructed of multiple parts or elements shown as multiple parts may be integrally formed, the operation of the interfaces may be reversed or otherwise varied, the length or width of the structures and/or members or connector or other elements of the system may be varied, the nature or number of adjustment positions provided between the elements may be varied. It should be noted that the elements and/or assemblies of the system may be constructed from any of a wide variety of materials that provide sufficient strength or durability,

in any of a wide variety of colors, textures, and combinations.

[0056] It will be understood that any described processes or steps within described processes may be combined with other disclosed processes or steps to form structures within the scope of the present device. The exemplary structures and processes disclosed herein are for illustrative purposes and are not to be construed as limiting. It is understood that the embodiments shown in the drawings and described above is merely for illustrative purposes, which is defined by the following claims as interpreted according to the principles of patent law.

15 Claims

1. An induction heating device comprising:

a D.C. power supply (46), referenced to a ground connection (54), configured to supply power to the induction heating device and comprising a voltage rectifier (50), configured to rectify an input voltage into a direct current and output the D.C. voltage to a D.C. bus (48) and a ground connection (54);

a plurality of resonant loads (36) arranged in a matrix (62) comprising a plurality of columns (70) and a plurality of rows (72), wherein each of the resonant loads (36) is connected at a first end to a row and at a second end to a column (70); a plurality of first switching devices (86a) in connection with each of the columns (70) between the D.C. bus (48) and at least one of the resonant loads (36); and

a plurality of second switching devices (86b) in connection with each of the rows (72) between the resonant loads (36) and the ground connection (54).

2. The device according to claim 1, wherein the resonant loads (36) comprise a capacitor (42) and an inductor (40) connected in parallel.

3. The device according to claim 1, further comprising: a rectifying device (34) connected in series on an anode side to each of the resonant loads (36) and on a cathode side to each of the rows (72) and the second switching devices (86b).

4. The control circuit according to claim 3, wherein the rectifying device (34) is configured to block reverse-current returning through the rows (72) or columns (70) into the resonant loads (36).

5. The device according to claim 1, further comprising: a rectifying device (34) connected in series between the first switching devices (86a) on an anode side and each of the resonant loads (36) on a cathode

side.

6. The control circuit according to claim 5, wherein the rectifying device (34) is arranged such that current is conducted directionally from the D.C. bus (48) into the resonant load (36) through the first switching device (86a). 5
7. The device according to claim 1, wherein each of the plurality of rows (72) and the plurality of columns (70) are transposed forming a transposed arrangement. 10
8. The device according to claim 1, wherein the first switching devices (86a) are disposed between the D.C. bus (48) and each of the columns (70). 15
9. The device according to claim 8, wherein each column (70) being connected to more than one of the resonant loads (36). 20
10. The device according to claim 1, wherein each of the second switching devices (86b) is disposed between the ground connection (54) and each of the rows (72). 25
11. The device according to claim 10, wherein each of the rows (72) is connected to more than one of the resonant loads (36).
12. The device according to claim 1, wherein the resonant loads (36) comprise an inductor (40) and a capacitor (42) arranged in parallel and the first switching devices (86a) and the second switching devices (86b) form a plurality of non-underclamped quasi-resonant inverters, each comprising the resonant loads (36) arranged in series with a rectification device. 30 35
13. The device according to claim 12, further comprising: a controller configured to selectively activate each non-underclamped quasi resonant inverter by controlling a combination of the first switching devices (86a) and the second switching devices (86b). 40
14. A method for controlling an induction heating device comprising: 45

selectively supplying D.C. power from a rectified power supply to a plurality of columns (70) of a matrix (62) of resonant loads (36) through a plurality of first switches; 50

controlling a first switching signal of the first switching devices (86a) in connection with each of the columns (70) between the power supply and the resonant loads (36); 55

controlling a second switching signal of a plurality of second switching devices (86b) in connection with each of a plurality of rows (72) of the

matrix (62) between the resonant loads (36) and a ground connection (54), and selectively conducting current from the power supply through at least one selected resonant load of the resonant loads (36) in response to an activation of the first switching device (86a) in connection to a selected resonant load in combination with an activation of the second switching device (86b) in connection with the selected resonant load.

15. The method according to claim 14, wherein each of the resonant loads (36) comprise a capacitor (42) and an inductor (40) connected in parallel between an input node and an output node, wherein each of the input nodes is in connection with one of the first switching device (86a) and each of the output nodes is connected to one of the second switching device (86b).

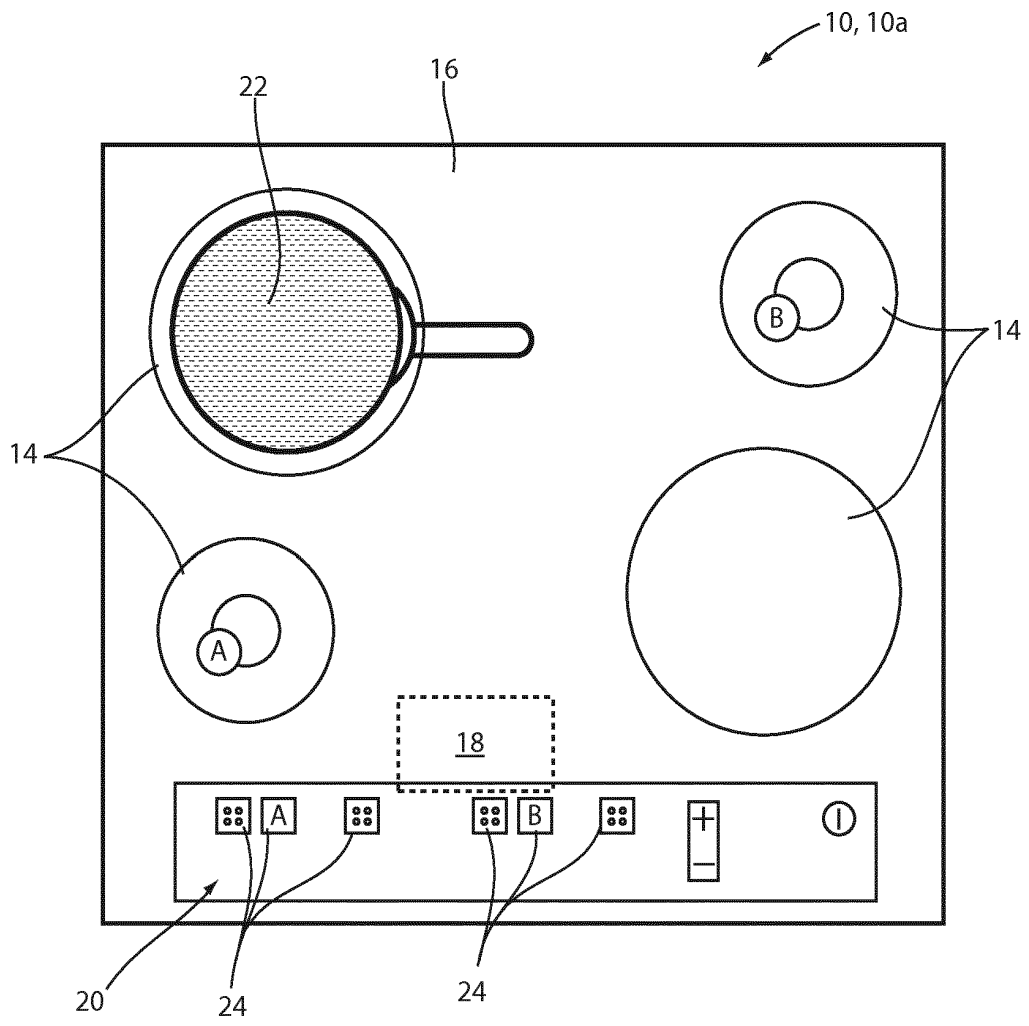


FIG. 1A

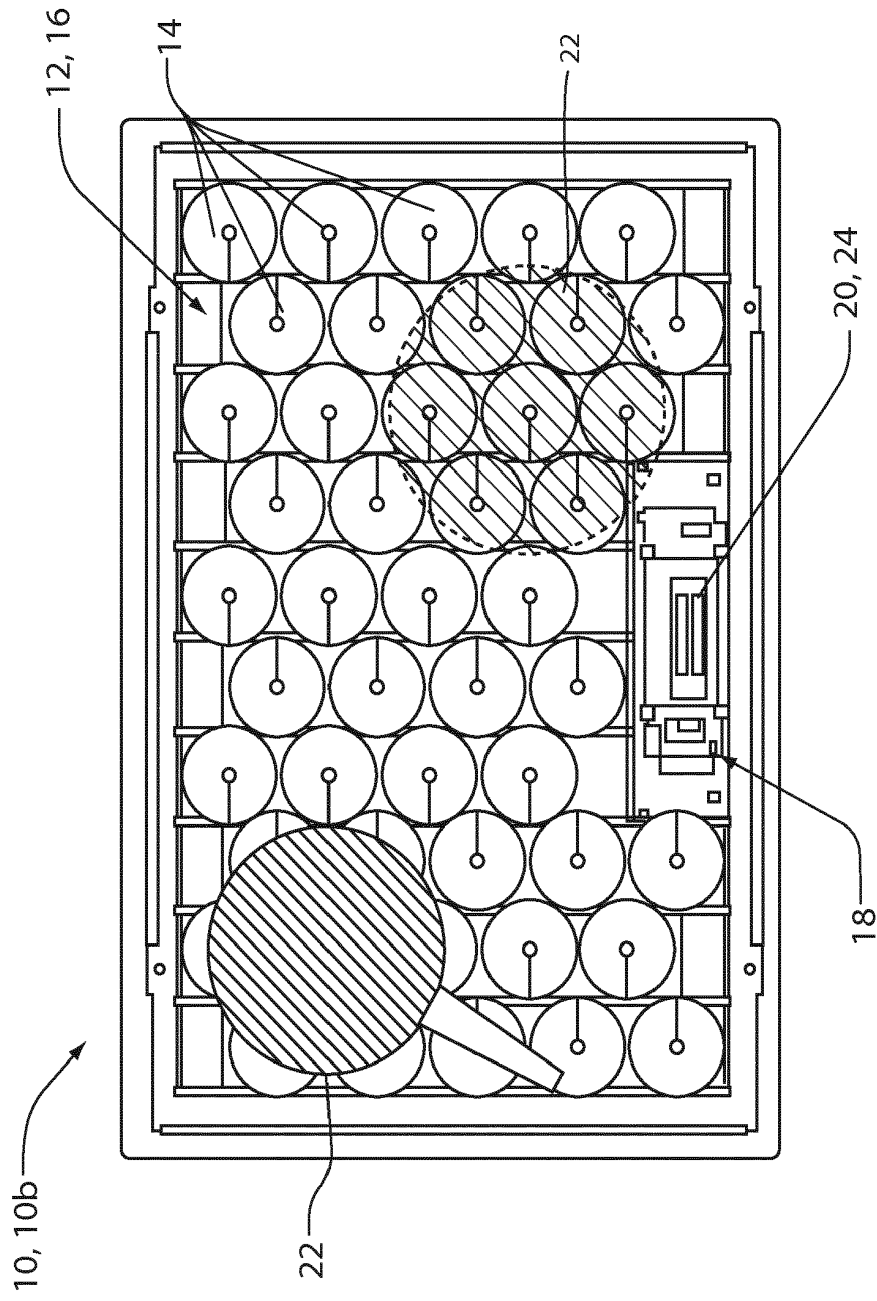


FIG. 1B

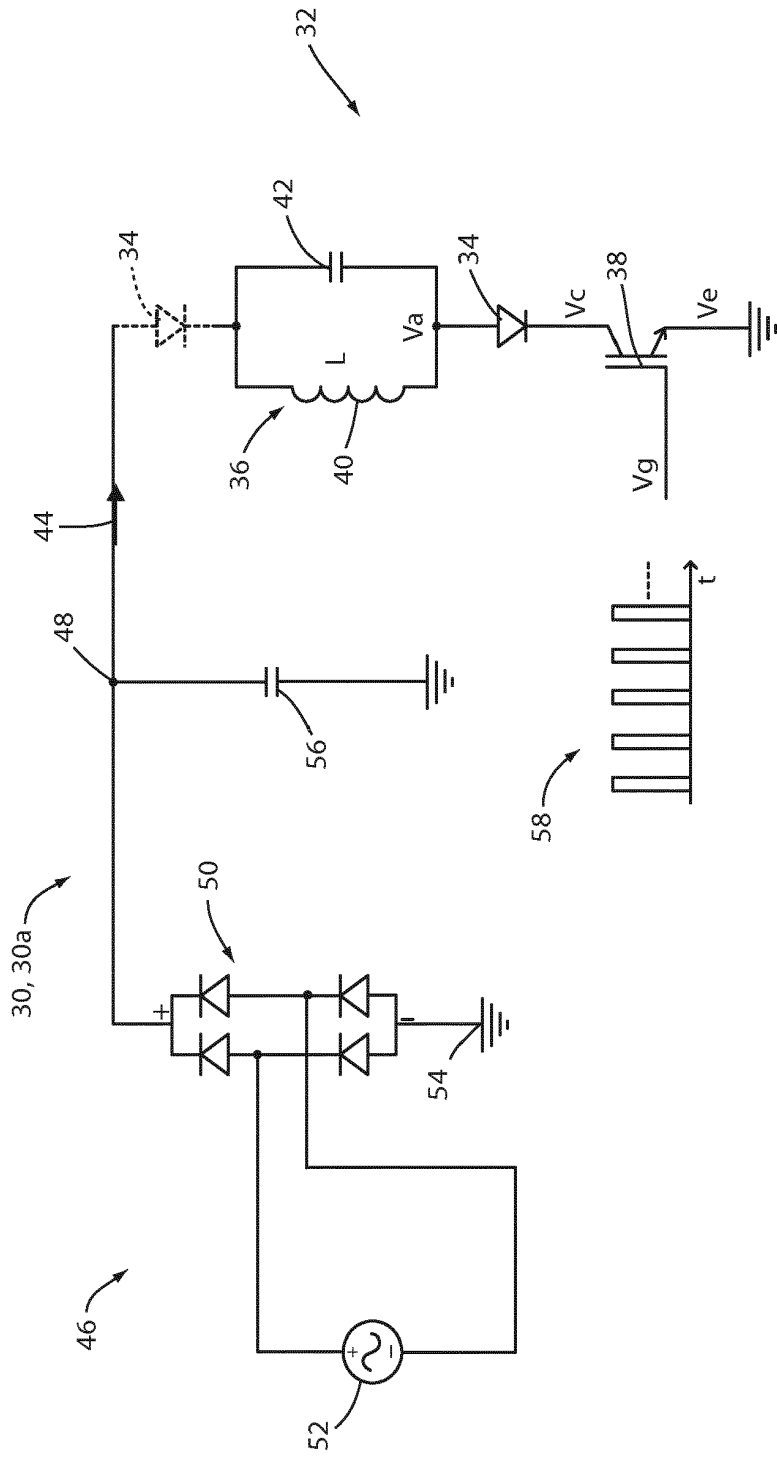


FIG. 2

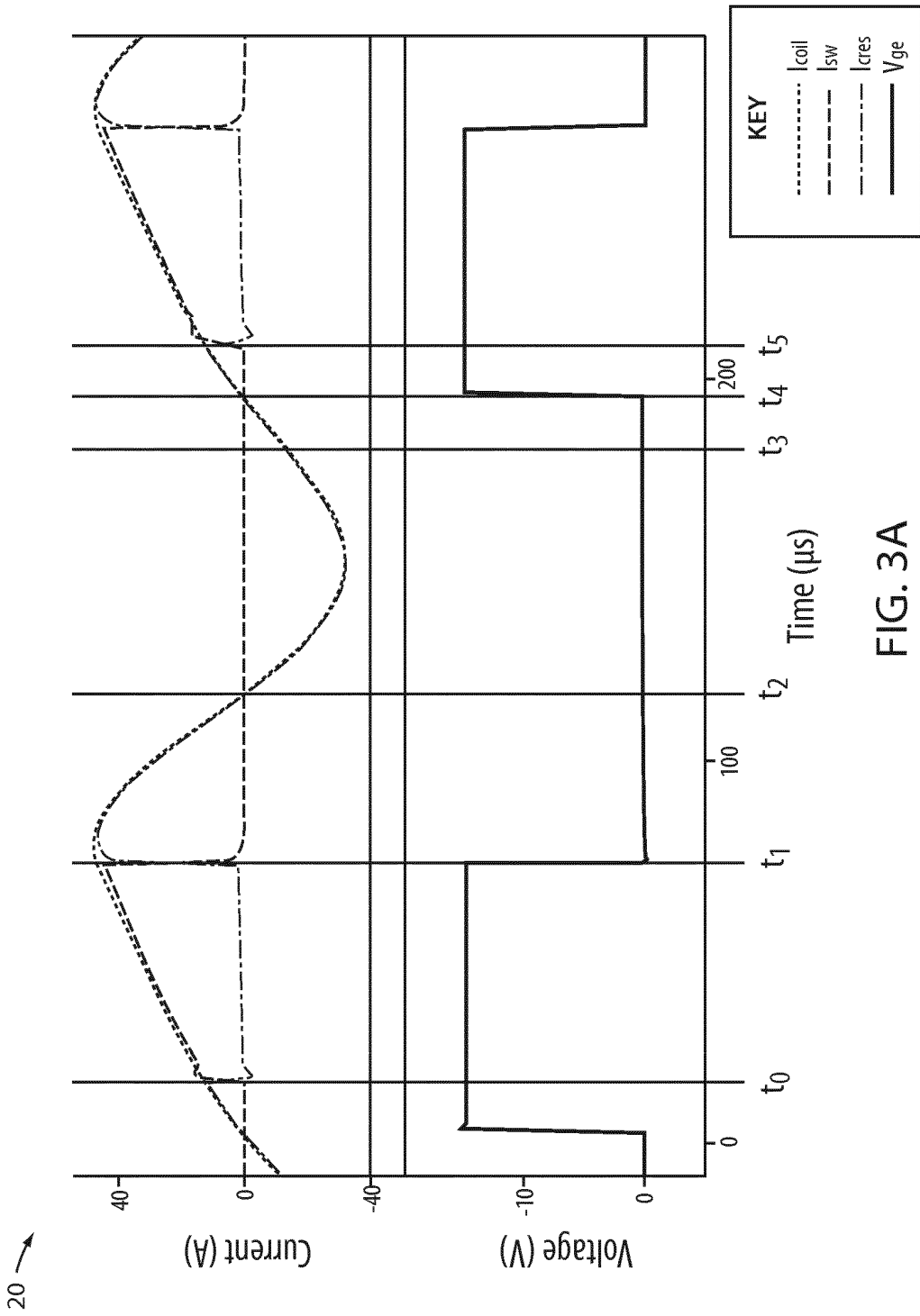


FIG. 3A

20 ↗

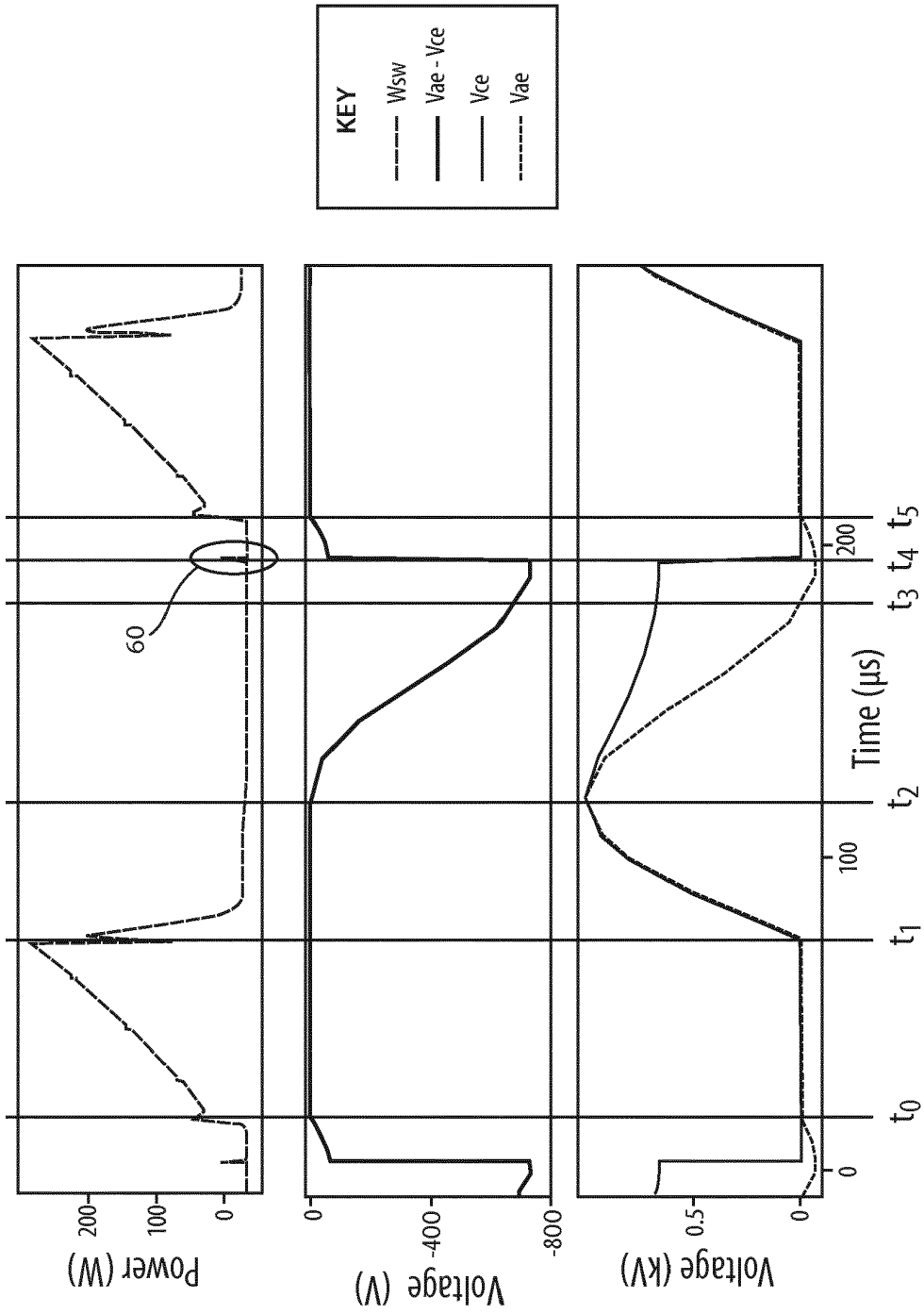


FIG. 3B

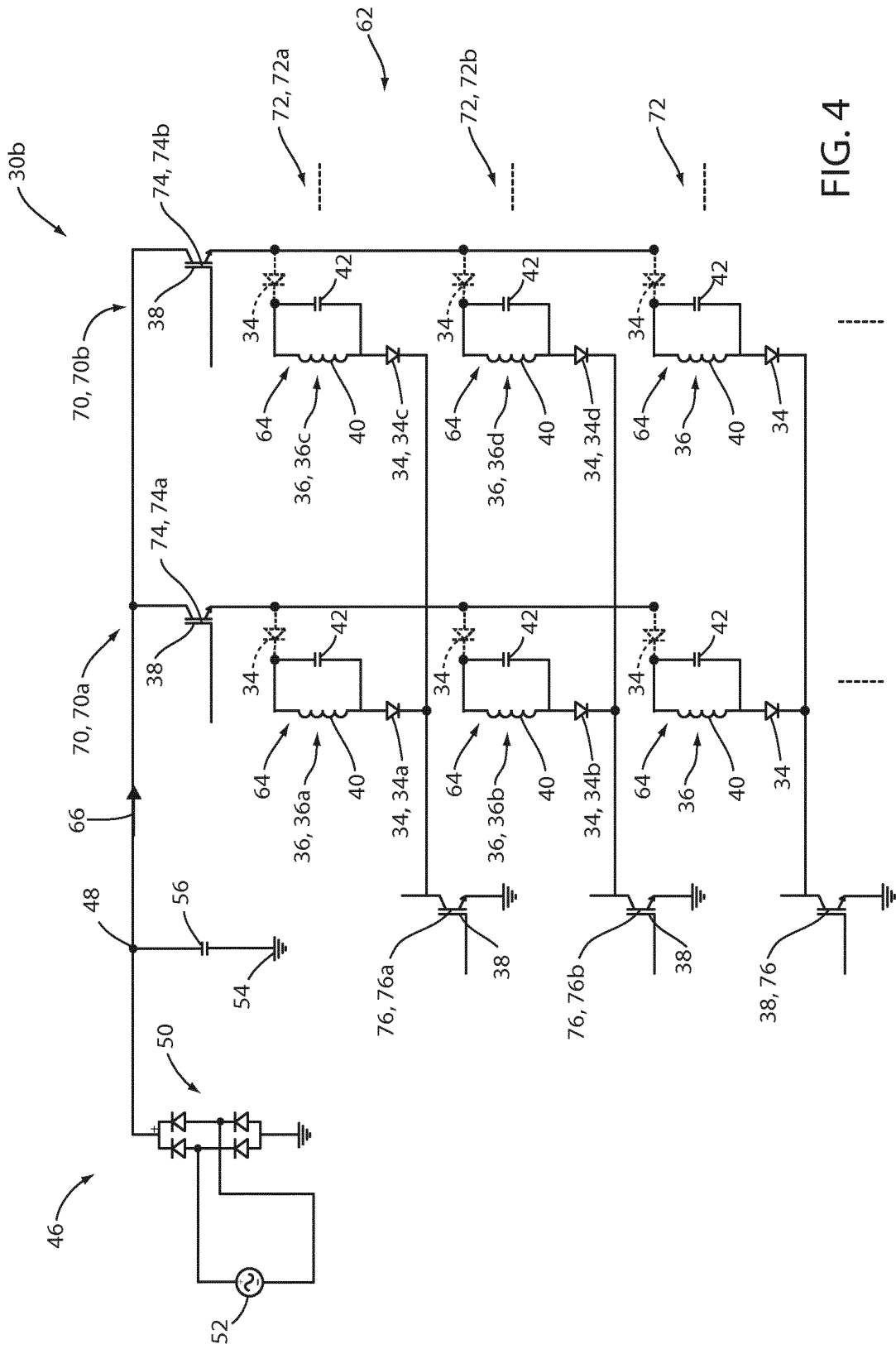


FIG. 4

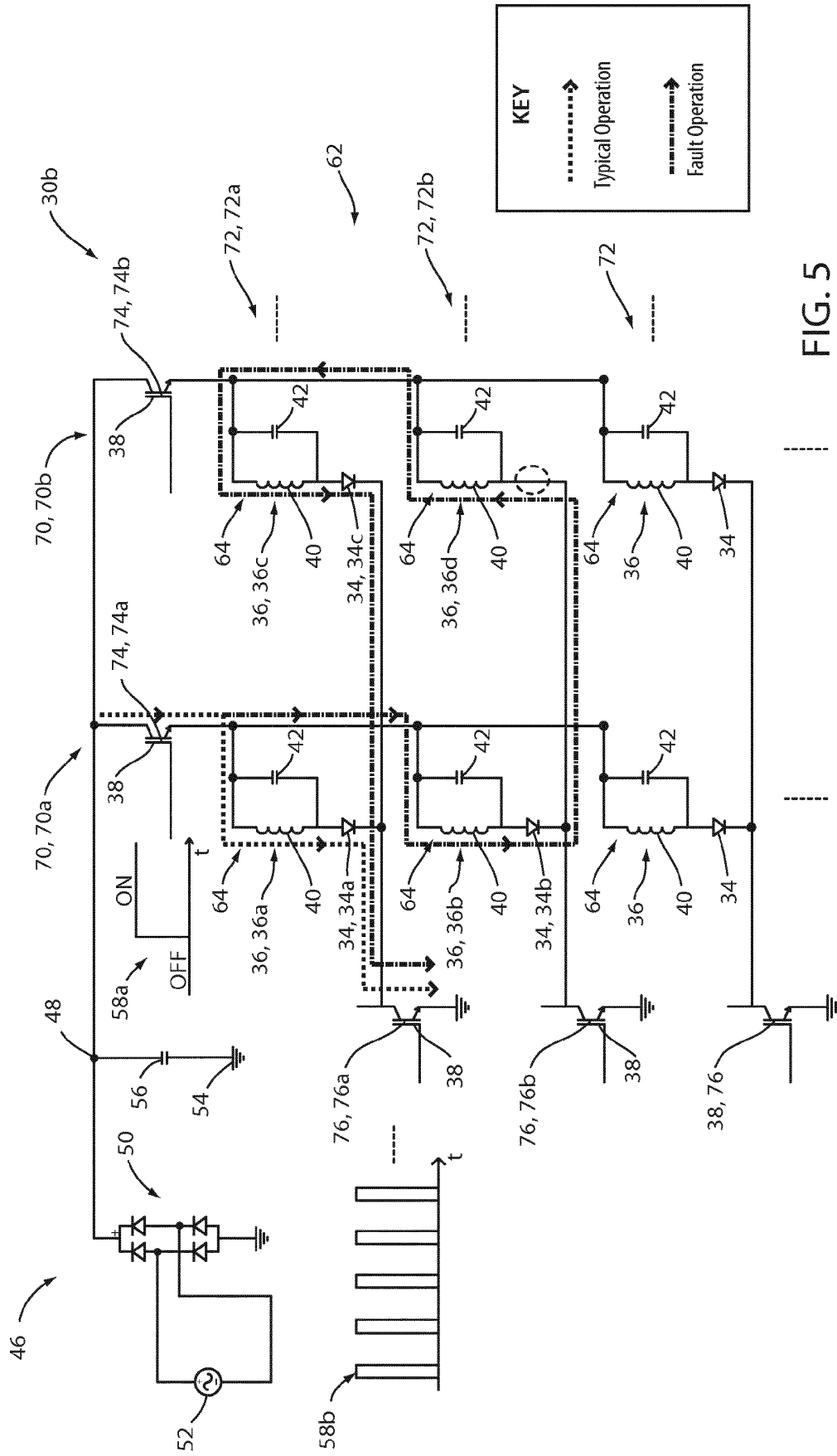


FIG. 5

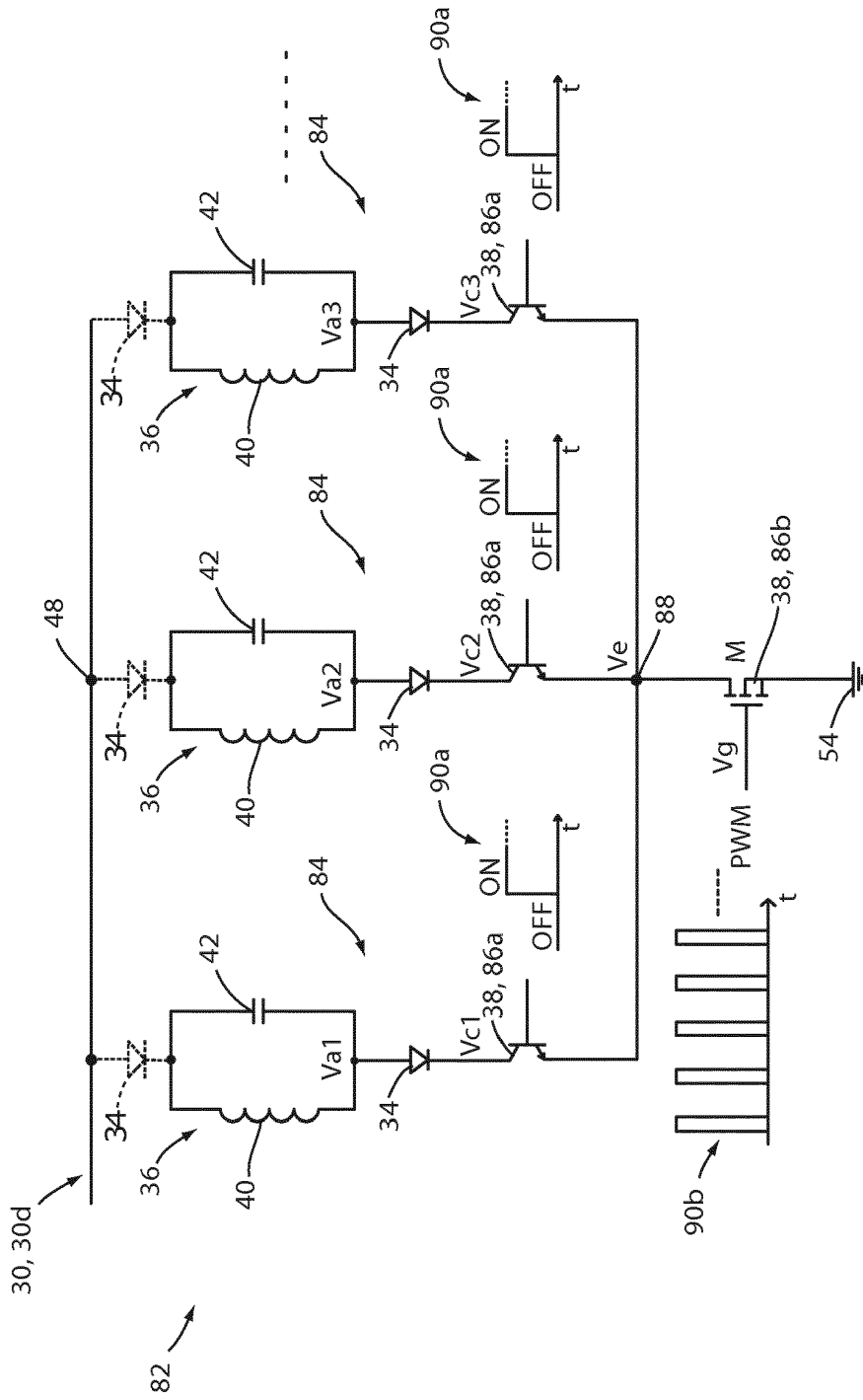


FIG. 7

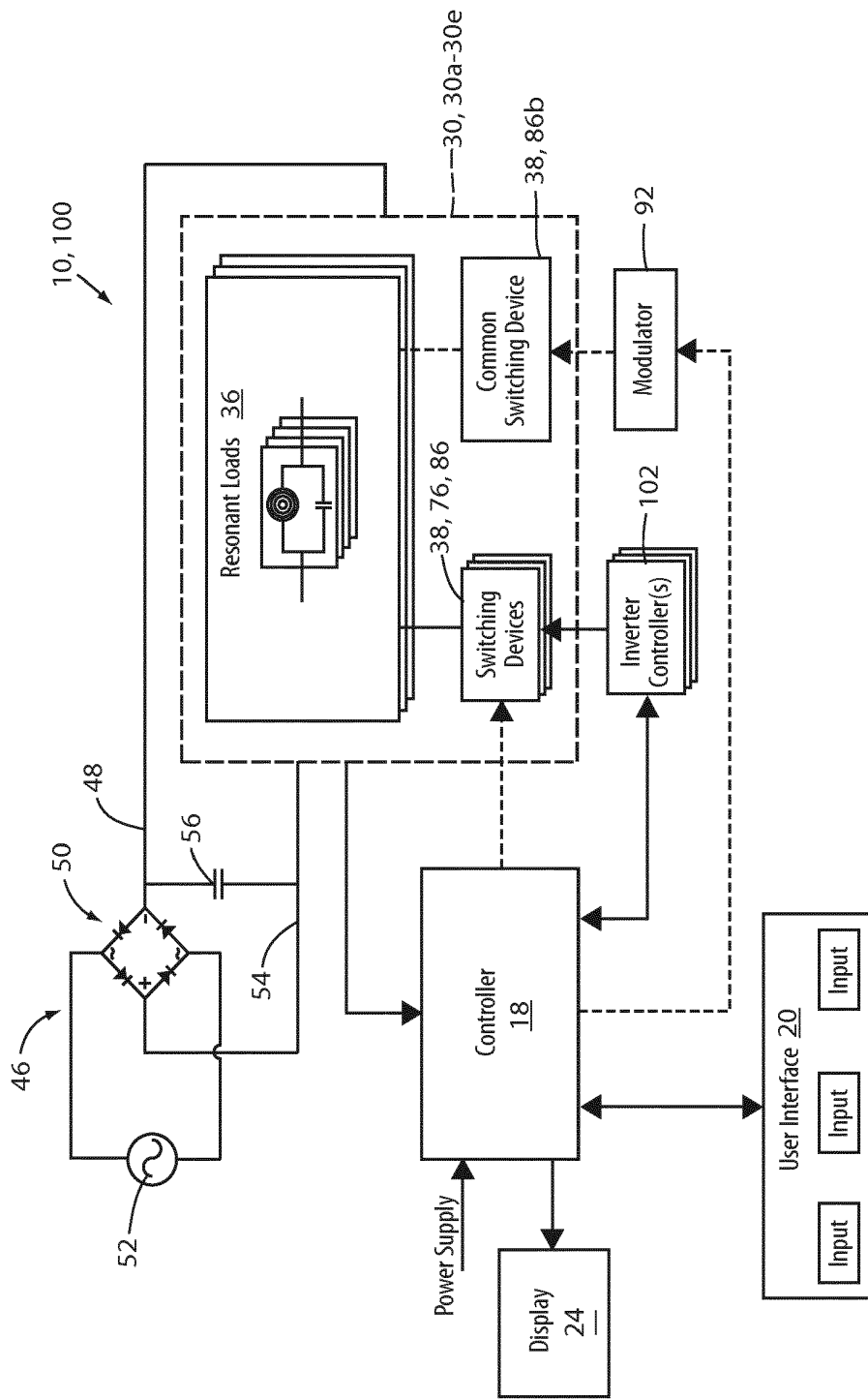


FIG. 9



EUROPEAN SEARCH REPORT

Application Number
EP 19 16 8553

5

10

15

20

25

30

35

40

45

50

55

DOCUMENTS CONSIDERED TO BE RELEVANT			
Category	Citation of document with indication, where appropriate, of relevant passages	Relevant to claim	CLASSIFICATION OF THE APPLICATION (IPC)
A	WO 97/19298 A1 (ELECTROLUX AB [SE]; ESKILDSEN CHRISTIAN [DK]) 29 May 1997 (1997-05-29) * page 4, lines 8-15; figures 1,3 * -----	1-15	INV. H05B6/06
A	EP 1 303 168 A1 (WHIRLPOOL CO [US]) 16 April 2003 (2003-04-16) * paragraph [0001]; figure 5 * -----	1-15	
A	EP 2 416 621 A1 (SAMSUNG ELECTRONICS CO LTD [KR]) 8 February 2012 (2012-02-08) * figure 2 * -----	1-15	
			TECHNICAL FIELDS SEARCHED (IPC)
			H05B
1 The present search report has been drawn up for all claims			
Place of search Munich		Date of completion of the search 11 September 2019	Examiner Pierron, Christophe
CATEGORY OF CITED DOCUMENTS X : particularly relevant if taken alone Y : particularly relevant if combined with another document of the same category A : technological background O : non-written disclosure P : intermediate document		T : theory or principle underlying the invention E : earlier patent document, but published on, or after the filing date D : document cited in the application L : document cited for other reasons & : member of the same patent family, corresponding document	

EPO FORM 1503 08.82 (P04001)

ANNEX TO THE EUROPEAN SEARCH REPORT
ON EUROPEAN PATENT APPLICATION NO.

EP 19 16 8553

5

This annex lists the patent family members relating to the patent documents cited in the above-mentioned European search report. The members are as contained in the European Patent Office EDP file on The European Patent Office is in no way liable for these particulars which are merely given for the purpose of information.

11-09-2019

10

Patent document cited in search report	Publication date	Patent family member(s)	Publication date
WO 9719298 A1	29-05-1997	AU 7561396 A	11-06-1997
		DE 69626298 D1	27-03-2003
		DE 69626298 T2	20-11-2003
		DK 0862714 T3	02-06-2003
		EP 0862714 A1	09-09-1998
		ES 2193270 T3	01-11-2003
		WO 9719298 A1	29-05-1997

EP 1303168 A1	16-04-2003	EP 1303168 A1	16-04-2003
		ES 2567796 T3	26-04-2016

EP 2416621 A1	08-02-2012	CN 102374558 A	14-03-2012
		EP 2416621 A1	08-02-2012
		KR 20120013633 A	15-02-2012
		US 2012043312 A1	23-02-2012

15

20

25

30

35

40

45

50

55

EPO FORM P0459

For more details about this annex : see Official Journal of the European Patent Office, No. 12/82